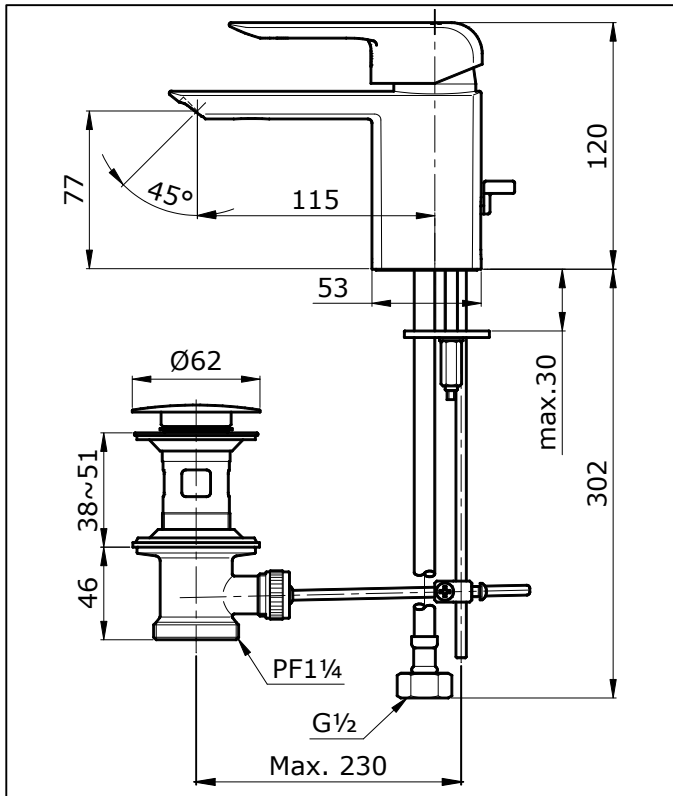


SPECIFICATIONS



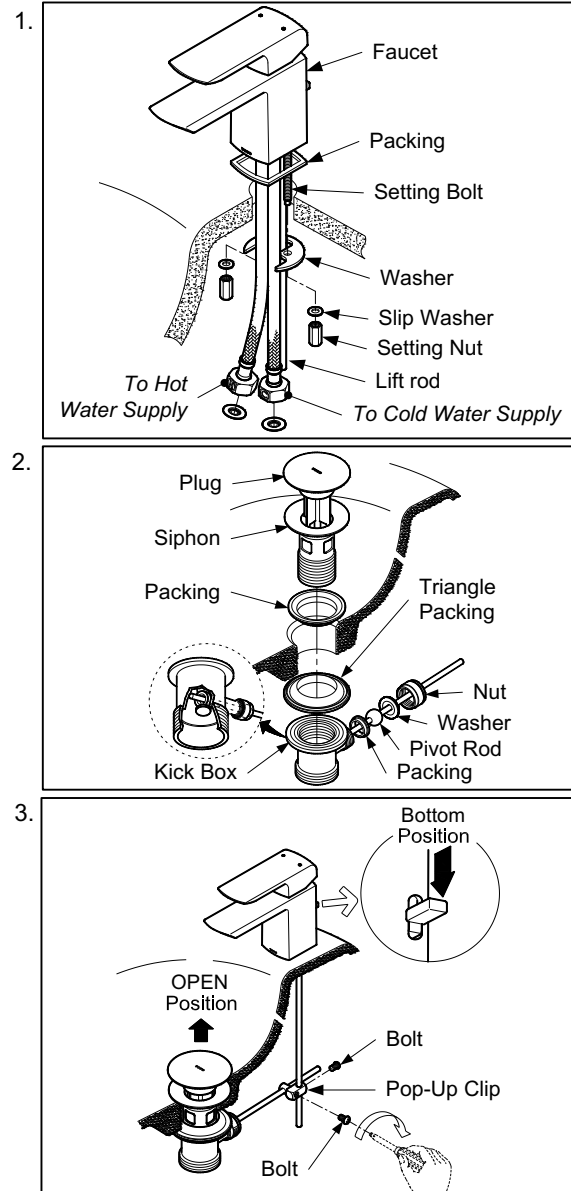
OPERATING CONDITIONS

1. Water supply pressure : 0.05 ~ 0.75 MPa
2. Ensure that water supply is clean (No Sand, Dirt, Etc.).

ATTENTION

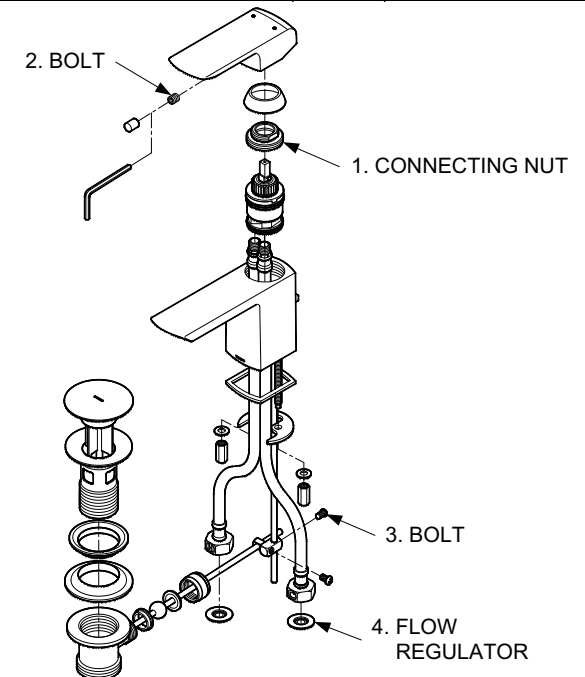
Use of abrasive cleaning material such as; detergents containing hydrochloric acids, thinner, polishing powder, and nylon brush is not recommended

INSTALLATION



TROUBLESHOOTING

| PROBLEM | CHECK POINT | SOLUTION |
|-------------------------------|-------------|------------------|
| Water leaks around the handle | 1 | Tighten |
| Handle is loose | 2 | Tighten |
| Plug cannot open and close | 3 | Tighten |
| Flow rate unsatisfactory | 4 | Remove and clean |



MAINTENANCE

1. Always wipe chrome plated area with dry soft cloth, and sometimes wipe it with cloth soaked in mild soap.
2. Clean the Flow Regulator periodically with soft brush

